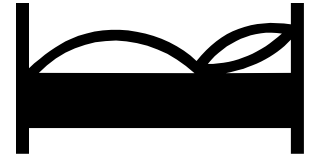
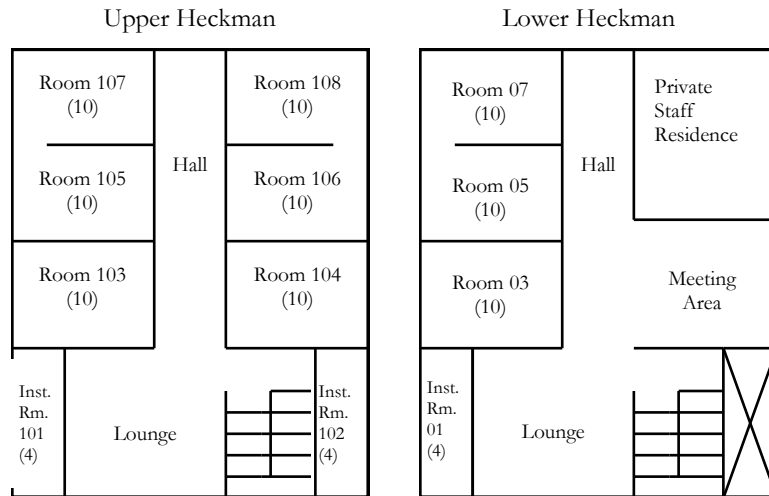


# Dormitory Floor Plans



## Heckman Dorm

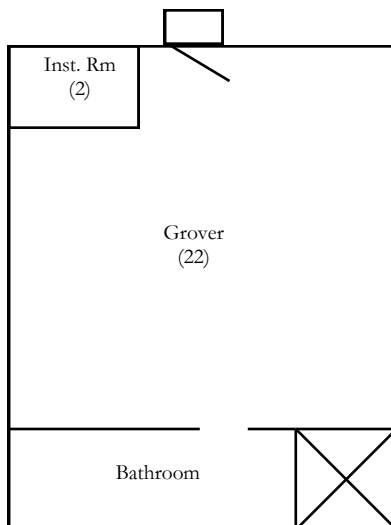
Capacity: 90 people in large rooms  
12 people in instructor rooms



In Heckman Dormitory rooms 05 and 07, 105 and 107, and 106 and 108 share bath and toilet facilities located between these rooms. All other rooms have their own bath and toilet facilities.

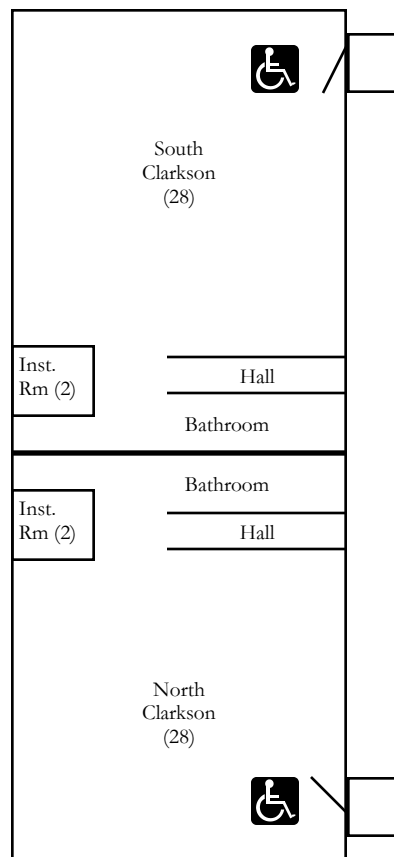
## Grover Dorm

Capacity: 22 people in common area  
2 people in instructor room with private bathroom



## Clarkson Dorm

Capacity: 56 people in common areas  
4 people in instructor rooms with private bathrooms



*Note: Number in parenthesis indicates the number of people each room can accommodate. All beds are bunk beds.*