



March 2012, Draft 00

12 9300 – Site Furnishings

PART 1. GENERAL

1.01 This section includes:

- A. Div 12 9313 Bicycle Racks and Loops
- B. Div 12 9323 Waste Receptacles, Recycle Receptacles and Ash Urns
- C. Div 12 9333 Manufactured Planters (to be added)
- D. Div 12 9343 Site Seating
- E. Div 12 9343 Site Tables
- F. Site Bollards
- G. Post and Chain
- H. Div 10 7343 Bus Shelters

1.02 Installation locations for products under this standard shall be approved by A&E Services

PART 2. PRODUCTS

2.01 Bicycle Racks and Loops

A. Single unit Loops

- 1. Manufacturer: Wabash Valley Manufacturing, Inc. www.wabashvalley.com
 - a). Model BL100N, 36”, **Black (Figure 5)**
 - b). In ground

B. Multiple unit racks

- 1. Manufacturer: Cora Bike Rack, Inc. www.cora.com
 - a). Cora Expo ‘W’ Series Bicycle Rack (**Figure 6**)
 - b). Length to be determined by A&E Services
 - c). Surface mount

2.02 Waste and Recycle Receptacles

A. Manufacturer: Victor Stanley, Inc. www.victorstanley.com

B. Supplier: Howard L. White & Associates, Buffalo Grove, IL
<http://www.howardlwhite.com/>

- 1. Waste Receptacles: (**Figure 2**)



- a). Model S-42, Ironsites, Bethesda Series
 - b). 36 Gallon (136 Liter) PVC liner
 - c). Powder coated, **Black**
 - d). S-2 Dome top, powder coated, **Black**
2. Recycle Receptacles: **(Figure 1)**
- a). Model S-42, Ironsites, Bethesda Series
 - b). 36 Gallon (136 Liter) PVC liner
 - c). Powder coated, **Blue**
 - d). S-2 Dome top, powder coated, **Blue**
 - e). Recycle decal produced and applied by NIU Media Services
3. Ash Urns **(Figure 3, 4)**
- a). Model S-20, Ironsites, Bethesda Series
 - b). 6 Gallon
 - c). Powder coated, **Black**
 - d). Standard stainless-steel ashtray
- 2.03 Manufactured Planters **(to be added)**
- 2.04 Site Seating
- A. Manufacturer: Landscapeforms, Inc. www.landscapeforms.com
1. Benches, (backed) **(Figure 3)**
 - a). Scarborough
 - b). Backed, horizontal strap seat style
 - c). 28"x 34"x 72"
 - d). 28"x 34"x 24"
 - e). Surface mount
 - f). Powder coat, **Black**
 2. Benches, (backless)
 - a). Scarborough
 - b). Backless, horizontal strap seat style
 - c). 28"x 34"x 72"
 - d). Surface mount
 - e). Powder coat, **Black**
- B. Other style selections, color or bench length must be submitted in writing, to A&E Services.
- 2.05 Site Tables
- A. Manufacturer: Landscapeforms, Inc. www.landscapeforms.com
1. Carousel **(Figure 7)**



- a). Table top: Steelhead Perforated
- b). Seat: Perforated (seat pattern must match table top pattern)
- c). Number of seats per table unit to be selected by Campus Planning Coordinator.
- d). Surface mount

B. Other style selections, color or bench length must be submitted in writing, to A&E Services.

2.06 Site Bollards

A. Manufacturers:

1. Reliance Foundry Co. Ltd. www.reliance-foundry.com/

- a). Cast Iron model R-7589, **Black (Figure 8)**

B. Other style selections, sizes or colors must be submitted in writing, to A&E Services

2.07 Post and Chain

A. Post and Chain shall be manufactured using:

1. 2 inch diameter SS40 gauge galvanized pipe with Black vinyl coating
2. Black vinyl coated Acorn cap
3. Single brace band and end posts
4. Double brace bands on line posts

B. Acorn cap and galvanized pipe suppliers:

1. Merchant Metals - <http://www.merchantsmetals.com/>
2. Master Halco, Inc.- <http://www.masterhalco.com/>
3. Stephens Pipe and Steel - <http://www.spsfence.com/>

2.08 Bus Shelters

A. Bus Shelters as manufactured by:

1. Brasco International - <http://brasco.com/>
 - a). Model: Slimline Series
 - 1). 8' X 6', **(Figure 9)**
 - 2). 12' X 6' **(Figure 10)**
 - 3). Example dimensional drawing **(Figure 11)**
 - b). Dark bronze anodized aluminum structure
 - c). 1/4" Clear tempered glass

- d). White dome roof with fascia/gutter system
- e). Full length aluminum wall mounted bench and backrest
- B. Other style selections, sizes or colors must be submitted in writing, to A&E Services

PART 3. EXECUTION

3.01 Installation

- A. Benches, Tables, Trash and Recycle Receptacles and Ash Urns:
 - 1. Installed on concrete slab (available sidewalk or area determined by A&E Services), using corrosion resistant cinch anchors.
- B. Bicycle Loops installed per Manufacturer’s recommendations.
- C. Bicycle Racks installed per Manufacturer’s recommendations.
- D. Bollards installed per Manufacturer’s recommendations.
- E. Post and chain installed as directed by A&E Services
- F. Bus shelters installed per Manufacturer’s recommendations.

Photographs and Drawings:



Figure 1 – Victor Stanley Model S-42 Recycle Receptacle Without dome



Figure 2 – Victor Stanley Model S-42 Waste Receptacle With dome



Figure 3 –
Landscapeforms
Scarborough Model



Figure 4 – Victor
Stanley Model S-20
Ash Urn



Figure 5 – Wabash
Valley, Model BL100N



Figure 6 – Cora Bike
Rack, Cora Expo 'W'
Series



Figure 7 –
Landscapeforms,
Carousel Model



Figure 8 – Reliance Foundry Co., Model R-7589



Figure 9 –
Brasco Slimline, 8 X 6



Figure 10 –
Brasco Slimline, 12 X 6

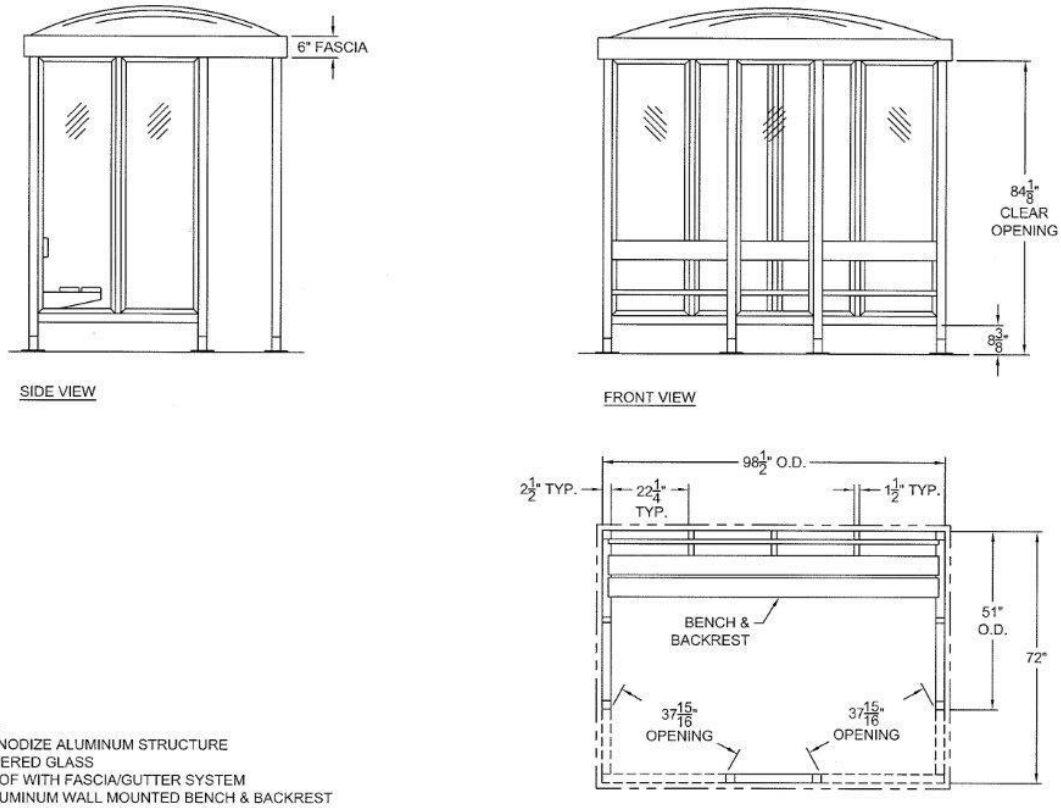


Figure 11 Example Dimensional Drawing

End of Division 12 9300

This section of the NIU Design and Construction Standards establishes minimum requirements only. It should not be used as a complete specification.