

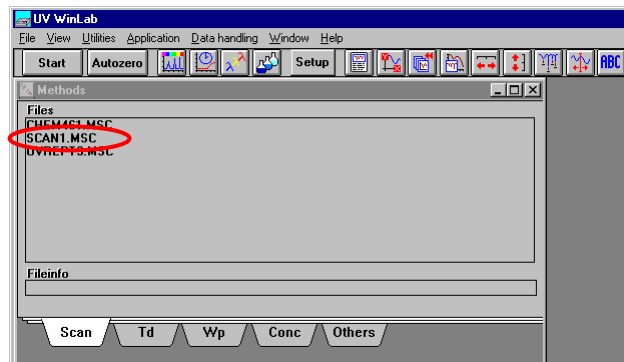
Perkin-Elmer Lambda 19 UV/VIS

Operating instructions

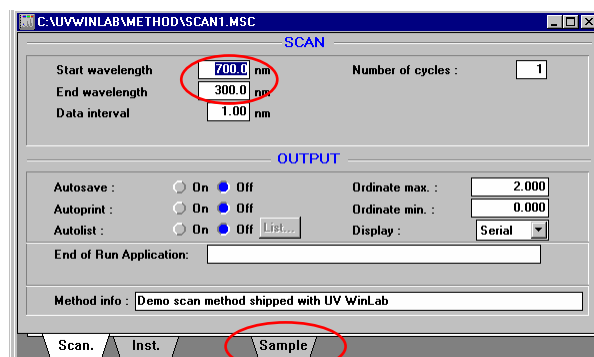
1. Start the computer and open the program Uvwinlab.
The status bar will display the message “instrument offline”.

2. Turn on the instrument. It will go through an initialization cycle which should take about 3 minutes. The display on the status bar will change. Wait until it displays “instrument ready.” The lamps should be equilibrated for about 15 minutes before use.

3. In the **methods window** double click **scan1.msc**. This will open the **scan window**.






4. Fill in desired wavelength ranges. Using the **sample tab**, add the number of samples you would like to measure.

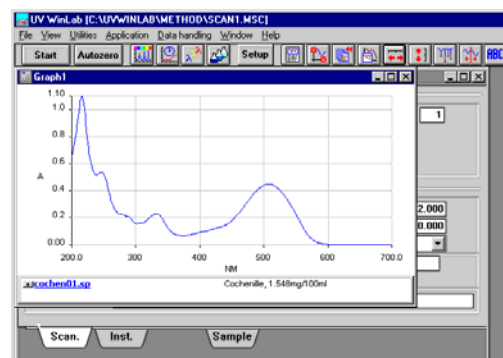


5. Click the **Autozero** button in the toolbar and when prompted, insert the cuvette with your blank and **ok**. The instrument will run the baseline correction for the desired wavelength region.

6. Click the green **Start** button, insert your sample when prompted and **ok**. The spectrum will be displayed in the **graph window**.

7. Adjust the graph automatically using the  buttons in the toolbar or manually adjust the range using the  button.

8.  will open the peak picking window. Choose a threshold according to your absorbance and o.k. The peak maxima and minima will be labeled in the graph window.



9. To print the graph go to **File** → **print**, to save the spectrum, go to **File** → **save as** and select your directory (before starting make a directory with your name in C:\uvwinlab\data\).

10. Exit the program and turn the instrument off. Also turn off the computer and monitor.