

SOCIAL / I - O AREA NEWSLETTER

DECEMBER 2006

INSIDE THIS ISSUE:

WHAT'S NEW	1
INTRODUCING	1
CONGRATS TO	2
FACULTY NEWS	2
STUDENT NEWS	2
ALUMNI NEWS	3
CONNECTIONS	5
READINGS	6

A NOTE FROM OUR AREA COORDINATOR

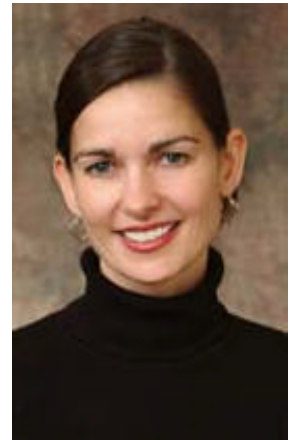
Hello Alumni, Current Students, and Faculty!

We are happy to present our second annual Social-I/O Area-Alumni Newsletter. Thank you for the positive response to the first newsletter and for your continued participation – we can't have a newsletter without news from all of you. It is exciting to see what everyone is up to. I'm proud to be part of a program made up of such smart, productive, and fun people.

Thanks so much to Chay Hyatt, my fabulous assistant, for continuing the production of this newsletter.

Cheers,

Lisa Finkelstein
Social/ I-O Area Coordinator



WHAT'S NEW AT NIU?

Some of the things that have changed in the last year...

* Peter Gutierrez, our former Assistant Chair in Psychology, left NIU, and the position was converted to a Professional Staff Position called "Assistant to the Chair." Read a bit about Sonja Herington below. She's initiated some great changes to procedures to make things function even more smoothly, and also helped to spearhead a Christmas potluck and some snazzy and functional changes to the Department office.

* Stephanie Henagan joined the Department of Management in 2005, and became adjunct to Psychology in 2006. Stephanie received her Ph.D. from Louisiana State University in Management in 2006 and studies the impact of interpersonal interactions within the workplace.

INTRODUCING...

STAFF:

Joining us as the new Assistant to the Chair is **Sonja Herington**. (See pic to the left) Sonja transferred here from the Department of Foreign Language and Literatures (FLAL) in July 2006. Sonja started out as a student worker in 1998 while working on two bachelor degrees, one in Business Administration and one in Marketing (May 2001). Later Sonja returned back to school

and received her MBA in 2006. While working at the FLAL she was awarded one of the "25 Amazing Women of Northern Illinois University." She is married and has two boys ages 10 and 12.

The Department is happy to welcome four first-year students and one transfer student to our Social-I/O area for the 2006-2007 academic year.

STUDENTS:

Ed Hansen, B.A., Ripon College
Chelsea Lovejoy, B.A., University of Wisconsin-Steven's Point
Chandni Narvekar, M.A., University of Northern Iowa
Brett Wells, B.A., Augustana College
Jenny Swanson, M.A. Northern Illinois University. B.A.S., University of Minnesota-Duluth



CONGRATS TO...

DISSERTATION DEFENSES

TIM RITCHIE
 CORY SCHERER
 SARAH WOOD

THESIS DEFENSES

AMY SWANSON
 JESSICA HARTNETT
 EVELYN COMBER
 PAMELA BAUMER

FACULTY NEWS

JOHN SKOWRONSKI finished his 8 year term as Associate Editor at *Social Cognition* in Dec. 2006. He has begun his term as the Associate Editor of the *Journal of Experimental Social Psychology*. He has also started a term as a member of MPA's Executive Council. Furthermore, the ponytail is still intact.

of SIOP. She's finishing up her last year on the MPA Program Committee. In September she was an invited speaker at a conference entitled "Productivity, Competitiveness, and Human Capital in an Aging Society at Castle Marbach in Ohningen, Germany. She now has the international travel bug!

LISA FINKELSTEIN is beginning her second term as Secretary



John Skowronski
 (with ponytail, still)



Pictured: Some of the current department

Top row (From L to R):
 George Guajardo, Chris Parker, Lauren Irwin, Sarah Johnson, Kevin Byle, Pam Baumer, Brad Sagarin, Chay Hyatt, John Skowronski.
Second Row: Brett Wells, Amy Martin, Dayla Randolph, Kristina Matarazzo, Jenny Swanson, Danielle Johnson.
Bottom Row: Amanda Durik, Chelsea Lovejoy, Ed Hansen, Chandni Narvekar, Stephanie Marberry, Cindy Cerrentano, Lisa Finkelstein,

CURRENT STUDENT NEWS

What we're up to here...

JULIE UNITE is currently working in Milwaukee where she assists with assessment and selection processes. She presented "Career perceptions in South Africa" at the Cross Cultural Psychology Conference in July, 2006. Her research interest is focused on emotional intelligence. Last January she tied the

knot with hubby and over the summer learned how to sail!
GEORGE GUAJARDO assists with the *Journal of Business Psychology* and has interest in Management consulting. He is also working on clarifying the numerous bits and pieces of his GRAND UNIFIED THEORY OF LEADERSHIP! He is also teaching Crisis Intervention at Milwaukee, WI

campus of Springfield College.
KRISTINA MATARAZZO worked for Valtera over the summer as a test administrator. While doing so she got to travel to GA, VA, and WV to run sessions and take in the sites. Her research interests include humor, interest, training, and mentoring. She recently presented "Not Another Blonde Joke: How women and men

perceive humor differently" at the MPA annual meeting held in Chicago, IL. She also presented "Who's your ideal mentor?" at the SIOP annual meeting in Dallas, TX.
TIM RITCHIE is doing his post doc with Sedikedes in Southampton. He has arrived there safe and sound despite the crazy journey getting over there. In case you ever want to

send a care package contact Skowronski for the address!

AMY MARTIN is working as a part time test administrator with Valtera in Rolling Meadows. Her current research interests include conformity, online infidelity, blogging and identity. She loves to travel and hopes to get some traveling and sight seeing done over the summer.

LAUREN IRWIN is a T.A. in the Social/Personality lab. She says the best part of her job is seeing student run experiments and helping them gain an understanding of interpreting and analyzing data with SPSS. Her research interest include any-

thing that allows for the application of STT/STI to the real world.

JILL BUDDEN had a recent presentation at SIOP 2006, and is still involved in research projects such as counterfactual thinking and attitude functions.

CHAY HYATT is the R.A. for Lisa Finkelstein and is currently working on body image, gender issues, and team performance research. She also has a part time human resources internship with MRI Network in St. Charles. Her interests include cross training and other team processes. She is also counting down the days till her

July 28th wedding.

CHELSEA LOVEJOY had a recent poster presentation at MPA 2006 on the predicting factors of corporal punishment. Her main research interest focuses on motivation. She has also studied Tae Kwon Do for most of her life. If there is any one interested in working out and getting some free lessons, let her know!



SPOTLIGHT

Mel Gonnerman

- On teaching:

“The biggest piece of advice I can give to any first time teacher is that teaching should be a discussion, not a monologue.”

ALUMNI NEWS

Wonder what your old classmates are up to?

MEL GONNERMAN is working as an Assistant Professor in the Department of Psychology at the University of Northern Iowa where he researches the relationship between religion and Hispanic and Latino health. He also serves as a Projects Coordinator for the Center for Social and Behavioral Research at UNI. He recently presented a paper at the VII Congreso Latino-Americano de Sociología Rural (7th Latin American Congress of Rural Sociology) in Quito, Ecuador titled “Acculturation and health among Latin American immigrants in rural areas of the United States.” He is teaching himself Spanish in order to better communicate with the Mexican children in an orphan-

age that is helped by a Christian non-profit organization that he is apart of. Here is a link to view some pictures of the children he has interacted with from the Seeds for the Fatherless Organization.

www.seedsforthefatherless.org

SARA FARRELL is back in the Midwest after year of warm weather in Savannah, Georgia where she taught at Armstrong Atlantic State University. She is now teaching at Coe College at which is a small liberal arts college in Cedar Rapids, Iowa. Much of her summer focused around house renovations but if anyone is every in the area she is ready to welcome house guests!

CORY SCHERER is a Visiting Assistant Professor in the Dept of Psychology at Denison Uni-

versity in Granville, Ohio. He enjoys the students, other faculty members and the atmosphere. His interests are persuasion, social cognition and evolutionary psychology. Recently, he presented a paper at the annual meeting of the Society of Personality and Social Psychologists in Memphis, TN. A big congrats is due considering he and his wife Jen are expecting their first child in April.

LISA GETTA is a Leadership & Team Development Consultant for Advocate Health Centers. Her main focus is on leadership development and team leadership, however, she is also involved in various other OD interventions. She says the balance between data and detailed work is refreshing. She also enjoys the strategic

people involvement, data projects, and coaching opportunities that she has experienced. She truly enjoys initiatives. She moved to Chicago this past spring and is enjoying every bit of living in the city. She has spent a lot of time this past summer sailing. As a matter of fact, she entered the Mackinac boat race and took 3rd place overall and 1st place in her section for the 3rd year in a row — a new record! Her daughter Lauren is working at her dream job as an environmental education presenter at the Animal Kingdom in Disney World. She is making momma proud!

ALUMNI NEWS (CONT'D)

BARB HOULE is a Psychology Instructor at Riverland Community College in Austin, NM. Her research interests are volunteerism and the investigation of matching volunteer motives to task benefits. She has also collaborated on research concerning sex differences in jealousy and scale development for obesity attitudes. Over the summer she spent 6 weeks in Swaziland, Africa where she served in

the Peace Corp. She collected data and attended workshops, one of which was sponsored by UNIFEC that focused on HIV/AIDS prevention. She also attended festivals in celebration of “The Day of the African Child” and visited Durban, South Africa for touring and shopping. Captured here is a picture of her with several Swaziland children.



Current Trend in Psychology

- “Money is disappearing. It’s getting harder and harder to find funding for teaching and research related activities.”

Jeremy Heider

JEREMY HEIDER is an assistant professor at Stephen F. Austin State University in Nacogdoches, TX. He loves the fact that SFA is large enough to allow for research opportunities yet small enough to remain student-centered and most of all, NO WINTERS! His interests are implicit racial attitudes and interracial interaction behavior, social memory, social inferences, and gender differences to infidelity. Recent presentations include a paper titled “Implicit and explicit attitudes as predictors of conversational friendliness” at the MPA annual meeting in Chicago this past

May, a paper titled “Male sexual jealousy: Paternal uncertainty of lost paternal opportunity” presented in January at the annual MPA in Chicago, and a paper titled “Implicit and explicit predictors of spontaneous behavior” presented at the Seventh Annual Meeting of the Society for Personality and Social Psychology in California. Jeremy and his wife also got a second miniature dachshund in March. Pictures of the new dog with big brother Frank are to the right.



CONNECTION CORNER

This section serves to connect alumni and current students with research related needs and interests.

SEEKING RESEARCH

COLLABORATION AND CO-PUBS:

- Mel Gonnerman: contact him at mel.gonnerman@uni.edu
- Stephanie Marberry is interested in teaming up for either Social or I/O related research. Contact her at: sberryecc@hotmail.com
- Jill Budden: Contact her at jbudden@niu.edu
- Barb Houle: contact her at bhoule@riverland.edu
- Neil Christiansen: contact him at chris1nd@cmich.edu
- Sara Farrell: Contact her at farrelsa@mail.armstrong.edu
- Julie Unite: Contact her at julieunite@hotmail.com
- Daren Protolipac: Contact dsprotolipac@stcloudstate.edu
- George Guajardo: Contact gleeman@hotmail.com

RESEARCH SEEKING PARTICIPANTS:

- Karen Schnite is looking for K-12 teachers, and people studying to be teachers to fill out an online survey. Please recruit those you know and send them to: http://www.p20.niu.edu/P20/mathsci_survey.shtml
- Jeremy Heider is looking for undergrad participants from both NIU and SAF. Contact: heiderj@sfasu.edu
- Sara Farrell is looking for an organizational sample. Email: sfarrell@coe.edu
- Jill Budden is looking for working adult participants. Contact: jbudden@niu.edu
- Lisa Finkelstein is looking for orgs interested in research on mentoring, individual differences in diversity training, and/or humor at work. Contact: lisaf@niu.edu



OUR FABULOUS FIRST YEAR I.O./ SOCIAL PSYC STUDENTS!

WHAT DO YOU LIKE MOST ABOUT TEACHING?

- Helping students become interested in psychology.— Chelsea Lovejoy
- The interaction and open discussion that brings so many interesting ideas concerning psychology.— Ed Hansen

RECOMMENDED READING

The Social/IO Area faculty, alumni and students have been publishing like crazy. Here's some recommended reading, written in whole or in part by your NIU family.



Byle, K.A., Holtgraves, T. M. (in press). Integrity testing, personality, and design: Interpreting the personnel reaction blank. *Journal of Business and Psychology*.

Carlston, D.E; Skowronski, J.J. (2005) Linking versus thinking: Evidence for the different associative and attributional bases of spontaneous trait transference and spontaneous trait inference. *Journal of Personality and Social Psychology*. Vol 89(6) Dec 2005, 884-898.

Crawford, M. T., Skowronski, J. J., Stiff, C., & Scherer, C. R. (In press). Interfering with inferential, but not associative, processes underlying spontaneous trait inference. *Personality and Social Psychology Bulletin*.

Edlund, J. E., Heider, J. D., Scherer, C. R., Farc, M. M., & Sagarin, B. J. (2006). Sex differences in jealousy in response to actual infidelity. *Evolutionary Psychology*, 4, 462-470.

Farrell, S. K., & Finkelstein, L. M. (2007). Organizational citizenship behavior and gender: Expectations and attributions for performance. *North American Journal of Psychology*, 9, 81-96.

Finkelstein, L.M., DeMuth, R. L. F., & Sweeney, D. L. (in press). Obesity discrimination in employment: Further exploration of moderators and mediators. *Human Resource Management*.

Finkelstein, L. M., & Poteet, M. L. (in press). Best practices in formal mentoring programs in organizations. In T. Allen and L. Eby (Eds.). *The Blackwell Handbook of Mentoring*. Malden, MA: Blackwell Press.

Heider, J. D., Scherer, C. R., Skowronski, J. J., Wood, S. E., Edlund, J. E., & Hartnett, J. L. (in press). Trait expectancies and stereotype expectancies have the same effect on person memory. *Journal of Experimental Social Psychology*.

Heider, J. D., & Skowronski, J. J. (in press). Improving the predictive validity of the Implicit Association Test. *North American Journal of Psychology*.

RECOMMENDED READING (CONT'D)

Houle, B. J., Sagarin, B. J., and Kaplan, M. F. (2005). A functional approach to volunteerism: Do volunteer motives predict task preference? *Basic and Applied Social Psychology*, 27, 337-344.

Ritchie, T. D; Skowronski, J. J; Walker, W. R.; Wood, S. E.(2006). Comparing two perceived characteristics of autobiographical memory: Memory detail and accessibility. *Memory*, Vol 14(4) May, 471-485.

Ritchie, T. D., Skowronski, J. J., Wood, S. E., Walker, W. R., Vogl, R. J., & Gibbons, J. A. (2006). Event self-importance, event rehearsal, and the fading affect bias in autobiographical memory. *Self and Identity*, 5, 172-195.

Sagarin, B. J., Britt, M. A., Heider, J. D., Wood, S. E., & Lynch, J. E. (2004). Intrusive technology: Bartering and stealing consumer attention. In W. R. Walker, & D. J. Herrmann (Eds.), *Cognitive technology: Transforming thought and society* (pp 69-88). Jefferson, NC: McFarland & Company, Inc. Publishers.

Scherer, C. R. & Sagarin, B. J. (2006). Indecent influence: The positive effects of profanity on persuasion. *Social Influence*, 1, 138-146.

Sedikides, C., Skowronski, J.J., & Dunbar, R.I.M. (2006). When and why did the human self evolve? In M. Schaller, J.A. Simpson, & D.T. Kenrick (Eds.), *Evolution and Social Psychology* (pp. 55-80). New York, NY: Psychology Press.

Skowronski, J.J. (2005). In Diversity There is Strength: An Autobiographical Memory Research Sampler. *Social Cognition*, 23, 1-10.