

Syllabi for Geology Courses:

GEOL 201 Online interactive (Public Access): <http://jove.geol.niu.edu/faculty/kitts/GEOL201/geol201.html>

GEOL 301 Online interactive (Public Access): <http://jove.geol.niu.edu/faculty/kitts/GEOL301/geol301.htm>

GEOL 401 Online interactive (Public Access): <http://jove.geol.niu.edu/faculty/kitts/GEOL401/geol401.html>

GEOL 429 Online interactive (Public Access): http://jove.geol.niu.edu/faculty/kitts/GEOL429/Geol429_home.html

GEOL 475 Online interactive (Blackboard): <https://webcourses.niu.edu/webapps/portal/frameset.jsp>

See abbreviated version below. The full syllabus is interactive and includes a discussion board.

GEOL 482 Online interactive (Public Access): <http://jove.geol.niu.edu/faculty/kitts/GEOL482/geol482.html>

GEOL 483 Online interactive (Blackboard): <https://webcourses.niu.edu/webapps/portal/frameset.jsp>

GEOL 484 Online interactive (Blackboard): <https://webcourses.niu.edu/webapps/portal/frameset.jsp>

GEOL 487 N/A This is the course for student teaching. Grade is based on reviews returned by University Supervisors and Cooperating teachers. No additional coursework besides the preparation and delivery within their own classrooms.

GEOL 495 Online interactive (Blackboard): <https://webcourses.niu.edu/webapps/portal/frameset.jsp>

Note that Dr. Augden Windelborn will be providing the abbreviated versions of GEOL 483, 484 and 495.



The Nature of Science Across Time and Culture

Geology 475X, Biology 484X, Chemistry 490X and Physics 490X

This course is an examination of major concepts of science and how they evolved. This course compares and contrasts of the role and practice of science in various cultures and examination of the interaction between science, technology and culture. CREQ: ILAS 201, 301 or 401.

Instructor Information - Fall 2009

Instructor Name: Dr. Kathy Kitts
Office Location: Davis Hall 402
Office Hours: Monday 1:00-2:00 pm and Wednesday 2:00-3:00 pm
Telephone: 753-5990
Email: kkitts@niu.edu

Meeting Days/Times/Location

Class meetings will be held in **Davis Hall 309** from **4:00-6:00 pm**.

Course Website

Blackboard. Note that you will need to use your Z-ID and because this course is cross-listed, each one of you will have to be input by hand. You will need to test whether you have access twenty-four hours after the first class. If you do not, it will be your responsibility to contact Dr. Kitts.

Teaching Learning Standards Addressed by This Course

- **NSTA Teaching Standards:** 1.c., 1.d., 2.a., 2.b., 3.a., 3.b., 4.a., 4.b., 7.b. and 10.d.
- **Illinois Professional Teaching Standards:** 1B., 1D., 1H., 1L., 3C., 3F., 3G., 3I., 3J., 7B., 7C., 9H., 9J., 10F. and 10H.
- **Science Core:** 1A., 1B., 1C., 1D., 1E., 1F., 1G., 2B., *STANDARD 3-8 Candidate Identified Content Discipline Specific Knowledge and Performance Indicators*, 9A., 9B., 9C., 9E., 9F., 9G., 10A., 10D., 18A., 18B. and 18F.
- **Illinois Technology Teaching Standards:** 2B., 2C., 2D., 2E., 6A., 6B., 6C., 6D. and 9A.

See the website for a copy of these standards written out in full.

Standard 3: Clinical Experience

See website for description: http://jove.geol.niu.edu/programs/teach_cert/index.html

Standard 4: Recruitment of Candidates:

We currently do not do any recruitment at all as our program is full and includes a waitlist.

Standard 5: Collaborative Activities:

Dr. Kitts is leaving 12-31-09. All her activities are now severed and no person has yet been hired to replace her.

Standard 5: Promotion and Tenure Policies:

http://www.clas.niu.edu/Personnel_Policies_and_Procedures.htm

Standard 5: Faculty Evaluation Forms:

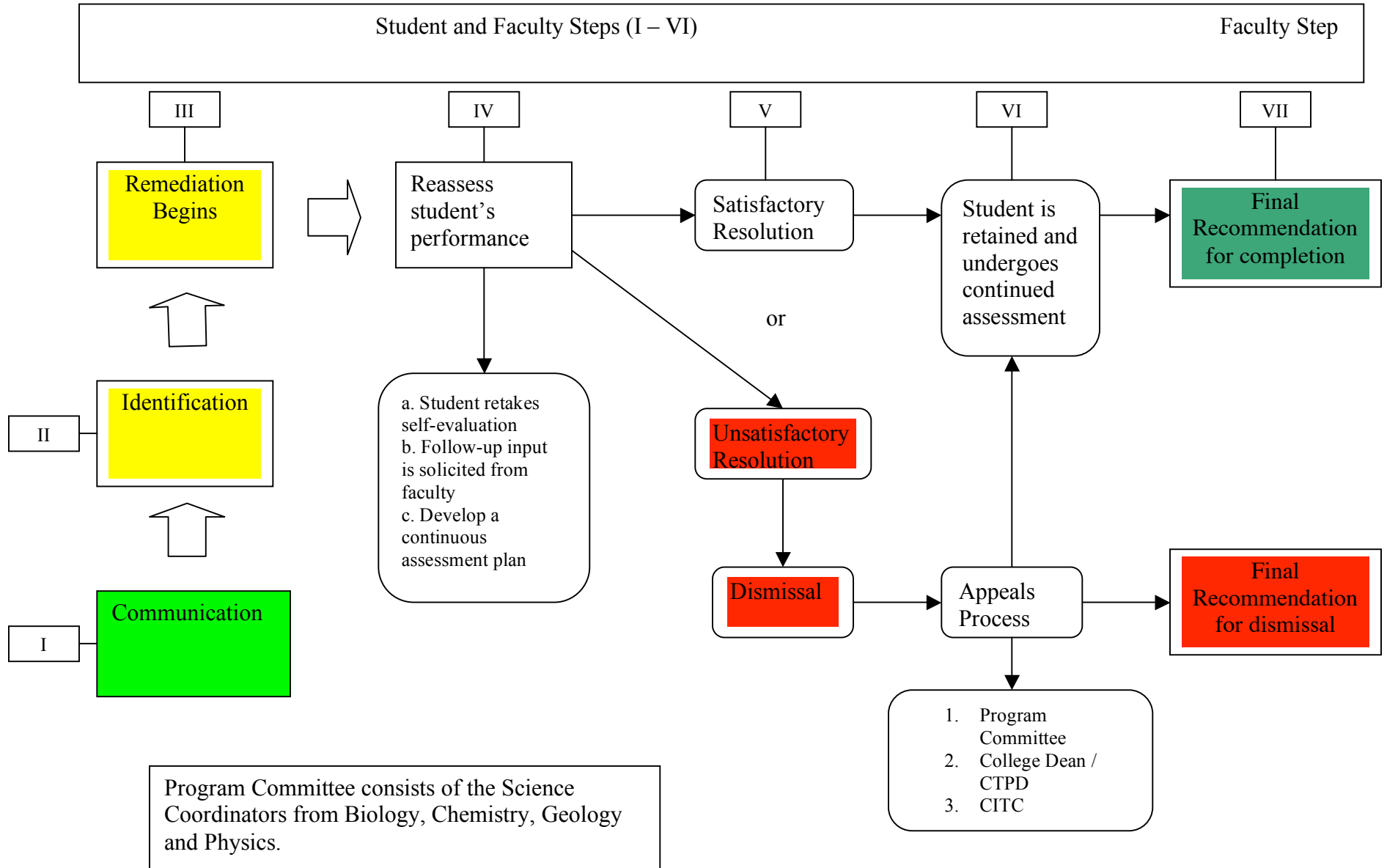
<http://www.niu.edu/clas/audience/faculty/evaluation.shtml>

Standard 6, Line 3: Advising: http://jove.geol.niu.edu/programs/teach_cert/index.html

Geology Standard 2 Line 6. Policies for handling student complaints. See below. The student complains to the coordinator, then the science coordinators, then CTPD, then CITC. They may also see the Ombudsman at any time but this is outside the teacher certification unit. (Same path for student dispositions.) Note that the decision tree in order to make changes in the system due to complaints is the second diagram.

Geology Standard 2 Line 7. File of student complaints. None during my tenure (August 2004-Dec. 2009)

Procedures for the Assessment of NIU Teacher Certification Dispositions (Geology and Environmental Geosciences)



Program Assessment Decision Tree

