



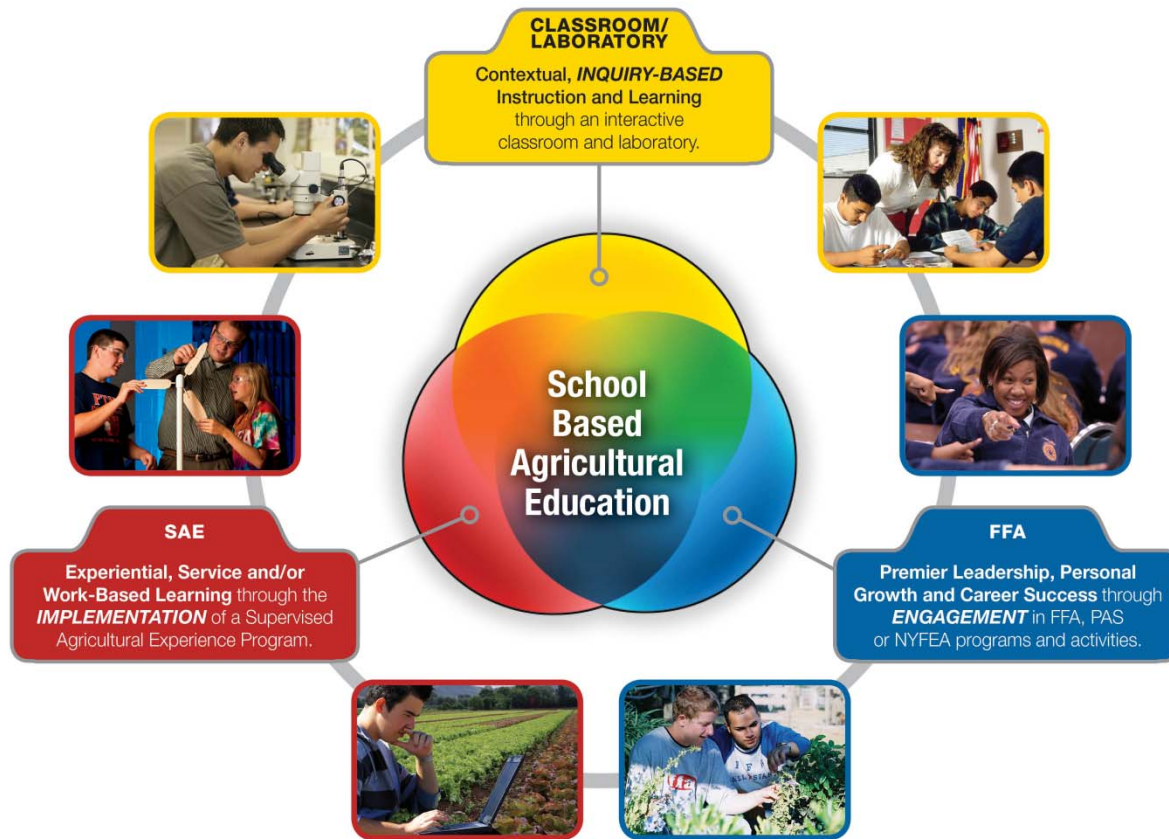
# **SAEs – WORK BASED LEARNING**

**Presented by:**

**Jennifer Waters**

**Facilitating Coordination in Agricultural Education**

# THE AG EDUCATION MODEL



# HOW DOES IT WORK?

- Students select one or more SAE areas to participate in:
  - Entrepreneurship -students develop their own businesses
  - Placement - students work for others in business or industry
  - AgriScience - students investigate agriculture-related topics in science, technology, engineering, and math
  - Exploratory - students to discover interests as they explore career areas through investigations, and job shadowing



## STUDENT AWARDS/RECOGNITION

- Over 80 award areas from Food Service to Beef Production and from Small Animal Care to AgriScience Integrated Research Systems.
- Students earn degrees (levels of membership) in the FFA based on their SAEs.
- Awards and degrees offered at the local, regional, state and national levels.





# A FEW EXAMPLES



## LOOKING AT THE NUMBERS

- Instruction provided in 90% of programs.
- All students maintain a SAE in 40% of programs.
- Instructors from 44% of programs do on-site visits to the students' projects.
- 67% of programs compete in proficiency awards.

