

**TEAMING:**

	<b>Answer</b>	<b>Percentage</b>
This workshop was:	Excellent	14%
	Very Good	32%
	Acceptable	27%
	Minimally Acceptable	7%
	Poor	0%
I learned:	A tremendous amount	22%
	A lot	27%
	A few new concepts	29%
	Not as much as expected	5%
	Very little	2%
Presenter(s) were:	Excellent	17%
	Very Knowledgeable	73%
	Okay	7%
	Need(s) improvement	2%
	Poor	0%
Learning activities were:	Excellent	15%
	Very Good	42%
	Acceptable	32%
	Minimally Acceptable	5%
	Poor	0%
Visuals were:	Excellent	21%
	Very Good	42%
	Acceptable	37%
	Minimally Acceptable	0%
	Poor	0%
Product requirements	Reinforced learning by doing	59%
	Will be beneficial to use with students in the classroom	39%
	Did not reinforce learning	7%
	Will not be useful with students in the classroom	12%
Handouts were:	Very useful as references	68%
	Not that useful later	18%

**INTEGRATED CURRICULUM MODELS:**

	<b>Answer</b>	<b>Percentage</b>
This workshop was:	Excellent	20%
	Very Good	54%
	Acceptable	26%
	Minimally Acceptable	0%
	Poor	0%
I learned:	A tremendous amount	20%
	A lot	27%
	A few new concepts	35%
	Not as much as expected	8%
	Very little	0%

Presenter(s) were:	Excellent	21%
	Very Knowledgeable	64%
	Okay	13%
	Need(s) improvement	2%
	Poor	0%
Learning activities were:	Excellent	9%
	Very Good	54%
	Acceptable	34%
	Minimally Acceptable	3%
	Poor	0%
Visuals were:	Excellent	16%
	Very Good	63%
	Acceptable	21%
	Minimally Acceptable	0%
	Poor	0%
Product requirements	Reinforced learning by doing	45%
	Will be beneficial to use with students in the classroom	36%
	Did not reinforce learning	12%
	Will not be useful with students in the classroom	7%

**Illinois Learning Standards:**

	<b>Answer</b>	<b>Percentage</b>
This workshop was:	Excellent	20%
	Very Good	59%
	Acceptable	20%
	Minimally Acceptable	0%
	Poor	0%
I learned:	A tremendous amount	24%
	A lot	27%
	A few new concepts	34%
	Not as much as expected	0%
	Very little	5%
Presenter(s) were:	Excellent	17%
	Very Knowledgeable	56%
	Okay	17%
	Need(s) improvement	0%
	Poor	0%
Learning activities were:	Excellent	15%
	Very Good	44%
	Acceptable	32%
	Minimally Acceptable	2%
	Poor	0%
Visuals were:	Excellent	10%
	Very Good	46%
	Acceptable	37%
	Minimally Acceptable	2%
	Poor	0%

Product requirements	Reinforced learning by doing	68%
	Will be beneficial to use with students in the classroom	37%
	Did not reinforce learning	2%
	Will not be useful with students in the classroom	7%
Handouts were:	Very useful as references	73%
	Not that useful later	12%

**Student Performance Assessment:**

	<b>Answer</b>	<b>Percentage</b>
This workshop was:	Excellent	22%
	Very Good	39%
	Acceptable	22%
	Minimally	7%
	Acceptable	5%
	Poor	2%
I learned:	A tremendous amount	24%
	A lot	46%
	A few new concepts	20%
	Not as much as expected	5%
	Very little	5%
Presenter(s) were:	Excellent	20%
	Very Knowledgeable	56%
	Okay	7%
	Need(s) improvement	5%
	Poor	5%
Learning activities were:	Excellent	20%
	Very Good	51%
	Acceptable	17%
	Minimally Acceptable	7%
	Poor	0%
Visuals were:	Excellent	24%
	Very Good	34%
	Acceptable	20%
	Minimally Acceptable	7%
	Poor	10%
Product requirements	Reinforced learning by doing	73%
	Will be beneficial to use with students in the classroom	37%
	Did not reinforce learning	5%
	Will not be useful with students in the classroom	5%
Handouts were:	Very useful as references	76%
	Not that useful later	5%

**TESA:**

	<b>Answer</b>	<b>Percentage</b>
This workshop was:	Excellent	22%
	Very Good	22%
	Acceptable	17%
	Minimally Acceptable	22%
	Poor	20%
I learned:	A tremendous amount	12%
	A lot	20%
	A few new concepts	22%
	Not as much as expected	29%
	Very little	15%
Presenter(s) were:	Excellent	20%
	Very Knowledgeable	22%
	Okay	24%
	Need(s) improvement	17%
	Poor	12%
Learning activities were:	Excellent	10%
	Very Good	15%
	Acceptable	29%
	Minimally Acceptable	22%
	Poor	20%
Visuals were:	Excellent	15%
	Very Good	20%
	Acceptable	37%
	Minimally Acceptable	12%
	Poor	5%
Product requirements	Reinforced learning by doing	24%
	Will be beneficial to use with students in the classroom	24%
	Did not reinforce learning	22%
	Will not be useful with students in the classroom	20%
Handouts were:	Very useful as references	49%
	Not that useful later	29%

**Illinois Teaching Standards:**

	<b>Answer</b>	<b>Percentage</b>
This workshop was:	Excellent	24%
	Very Good	39%
	Acceptable	22%
	Minimally Acceptable	2%
	Poor	0%
I learned:	A tremendous amount	27%
	A lot	44%
	A few new concepts	12%
	Not as much as expected	5%
	Very little	0%
	Excellent	29%

Presenter(s) were:	Very Knowledgeable	26%
	Okay	10%
	Need(s) improvement	5%
	Poor	0%
Learning activities were:	Excellent	27%
	Very Good	37%
	Acceptable	20%
	Minimally Acceptable	2%
	Poor	0%
Visuals were:	Excellent	24%
	Very Good	37%
	Acceptable	22%
	Minimally Acceptable	2%
	Poor	0%
Product requirements	Reinforced learning by doing	63%
	Will be beneficial to use with students in the classroom	39%
	Did not reinforce learning	2%
	Will not be useful with students in the classroom	0%
Handouts were:	Very useful as references	76%
	Not that useful later	5%

**Learning Styles & Multiple Intelligences:**

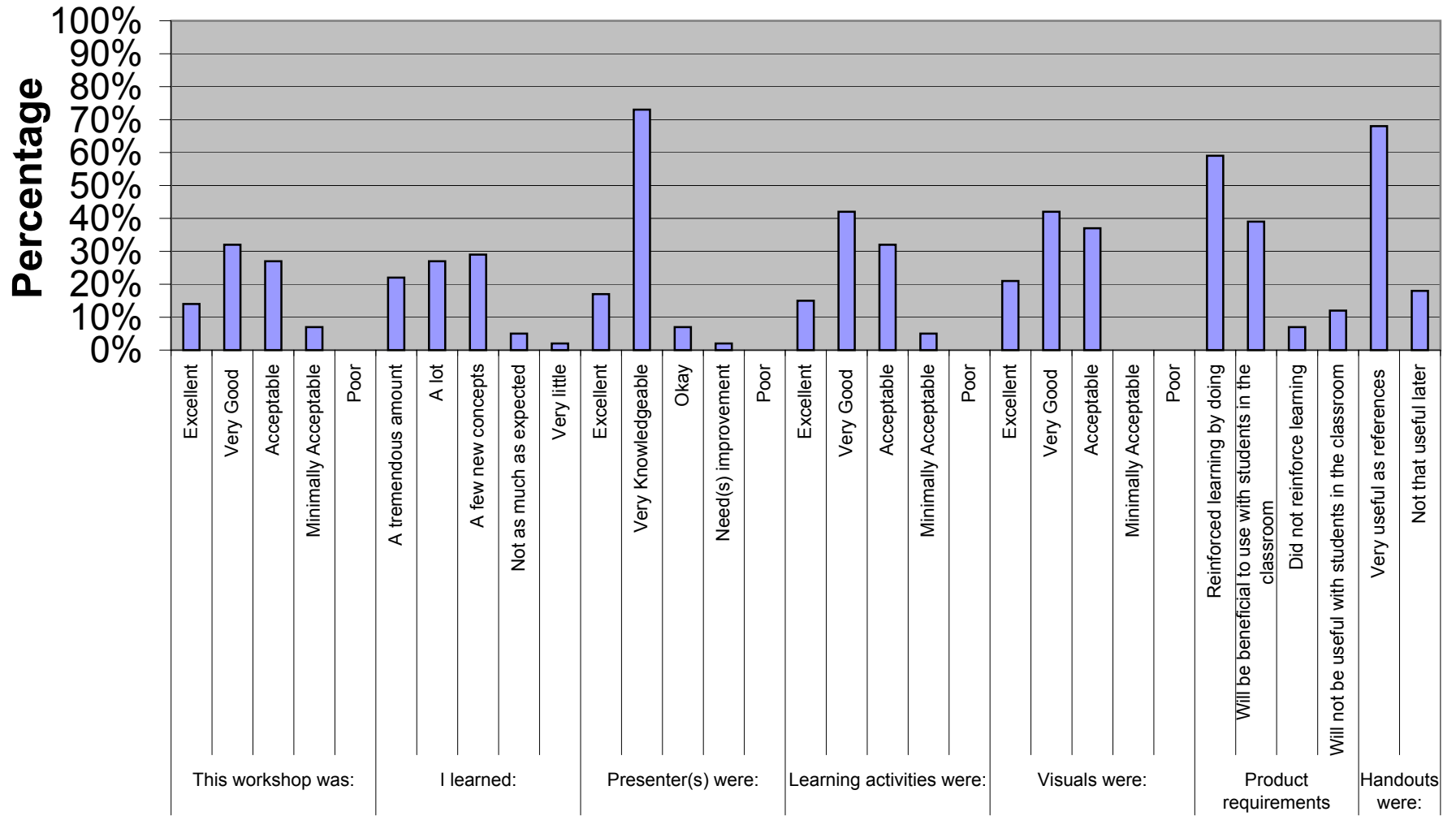
	<b>Answer</b>	<b>Percentage</b>
This workshop was:	Excellent	46%
	Very Good	32%
	Acceptable	7%
	Minimally Acceptable	0%
	Poor	0%
I learned:	A tremendous amount	54%
	A lot	22%
	A few new concepts	10%
	Not as much as expected	2%
	Very little	0%
Presenter(s) were:	Excellent	65%
	Very Knowledgeable	29%
	Okay	10%
	Need(s) improvement	0%
	Poor	0%
Learning activities were:	Excellent	46%
	Very Good	44%
	Acceptable	0%
	Minimally Acceptable	2%
	Poor	0%
Visuals were:	Excellent	63%
	Very Good	4%
	Acceptable	7%
	Minimally Acceptable	0%

	Poor	0%
Product requirements	Reinforced learning by doing	80%
	Will be beneficial to use with students in the classroom	46%
	Did not reinforce learning	5%
	Will not be useful with students in the classroom	0%
Handouts were:	Very useful as references	76%
	Not that useful later	2%

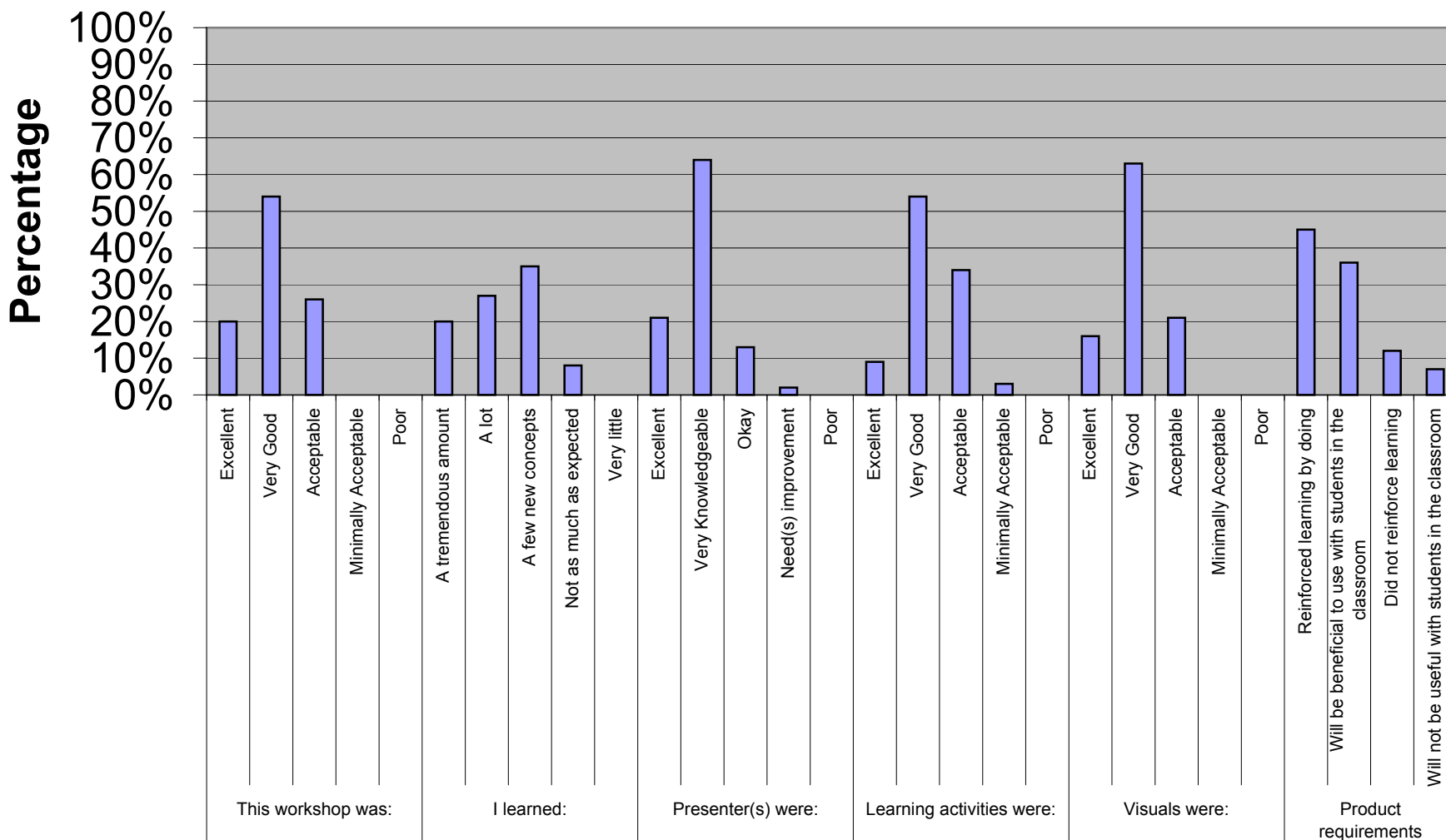
**Instructional Models:**

	<b>Answer</b>	<b>Percentage</b>
This workshop was:	Excellent	61%
	Very Good	34%
	Acceptable	5%
	Minimally Acceptable	0%
	Poor	0%
I learned:	A tremendous amount	63%
	A lot	27%
	A few new concepts	5%
	Not as much as expected	0%
	Very little	0%
Presenter(s) were:	Excellent	65%
	Very Knowledgeable	27%
	Okay	0%
	Need(s) improvement	0%
	Poor	0%
Learning activities were:	Excellent	56%
	Very Good	34%
	Acceptable	0%
	Minimally Acceptable	0%
	Poor	0%
Visuals were:	Excellent	46%
	Very Good	36%
	Acceptable	2%
	Minimally Acceptable	0%
	Poor	0%
Product requirements	Reinforced learning by doing	75%
	Will be beneficial to use with students in the classroom	51%
	Did not reinforce learning	5%
	Will not be useful with students in the classroom	0%
Handouts were:	Very useful as references	87%
	Not that useful later	0%

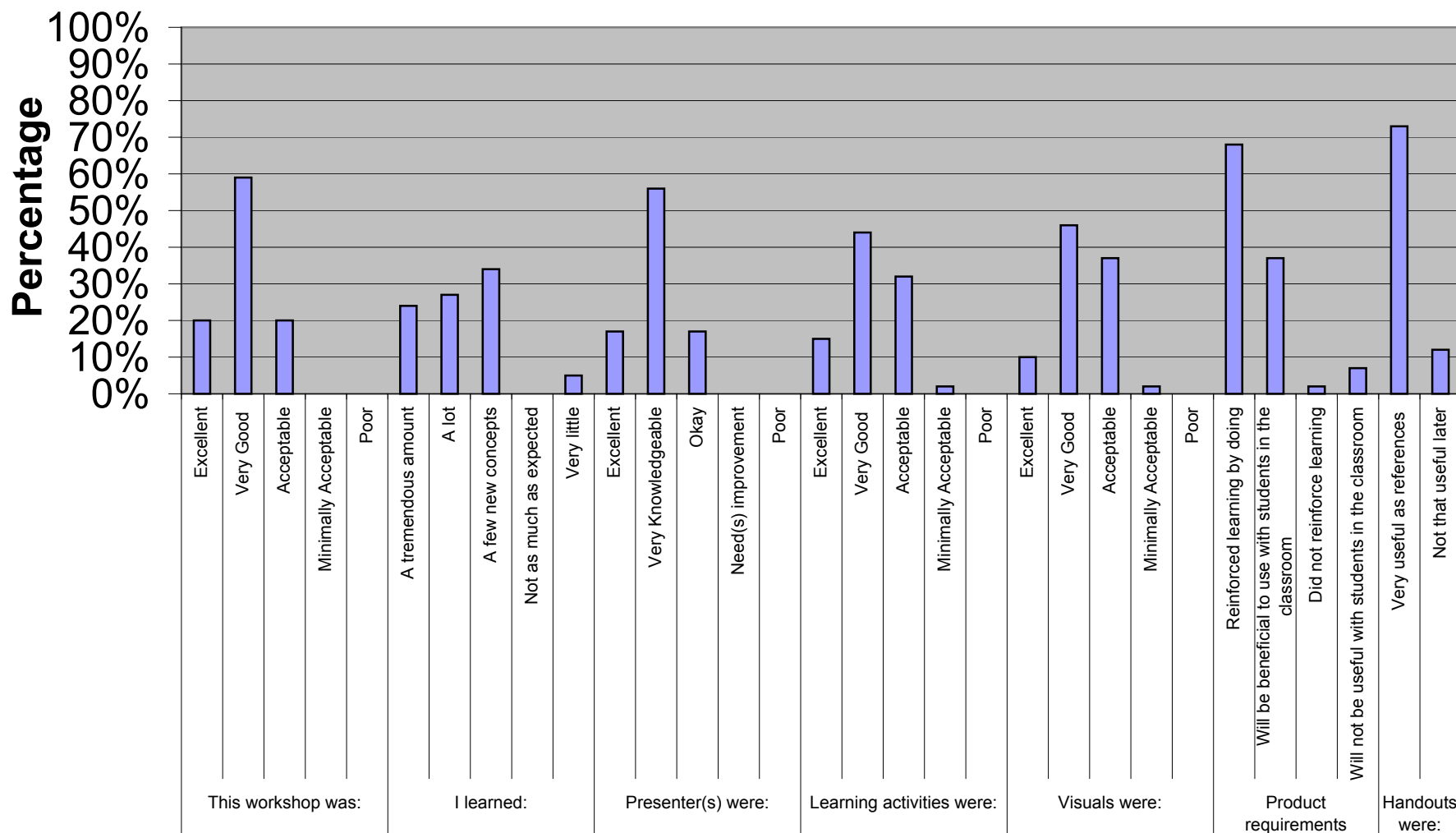
# Teaming Feedback



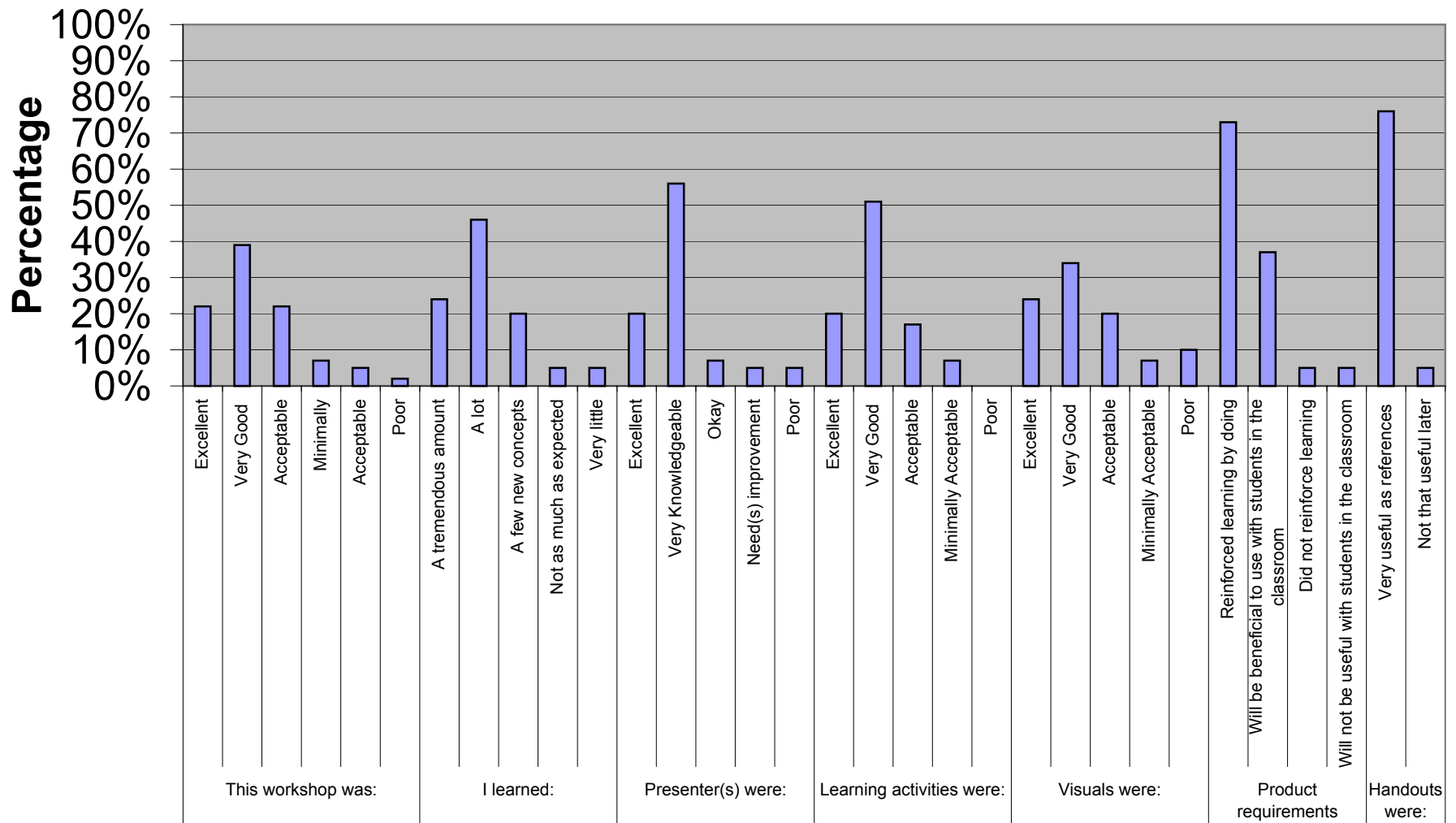
# Integrated Curriculum Models Feedback



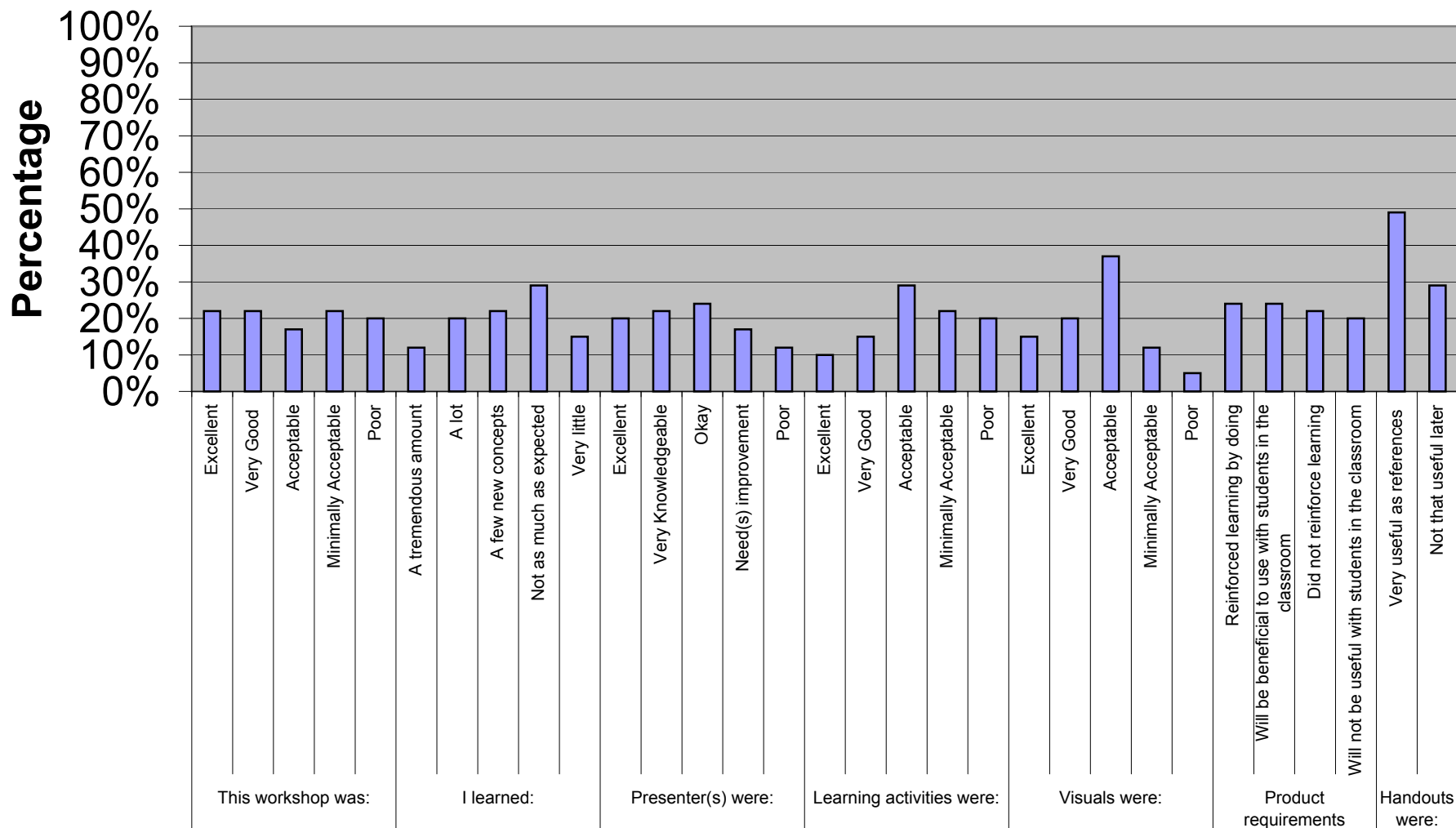
# Illinois Learning Standards Feedback



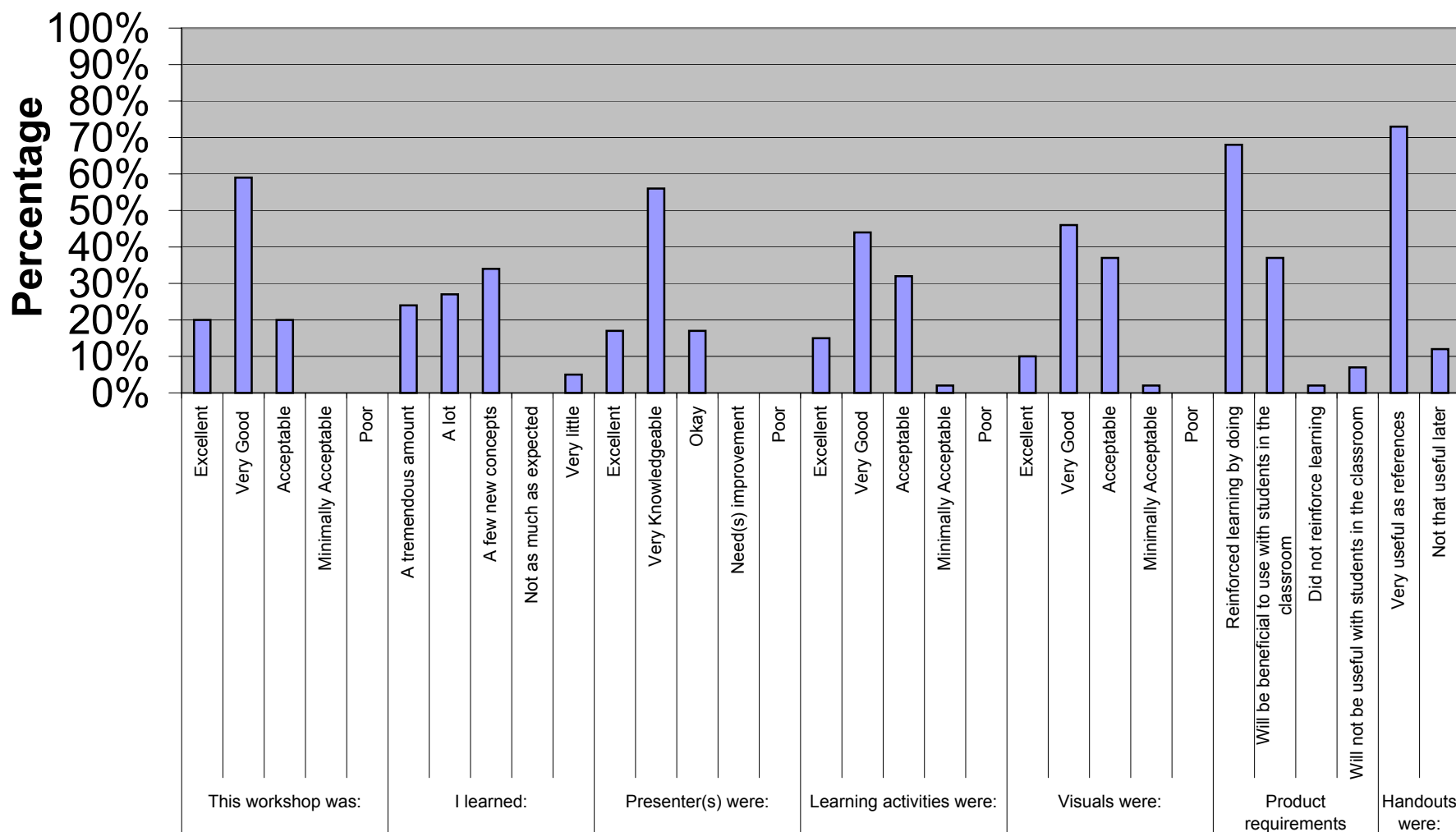
# Student Performance Assessment Feedback



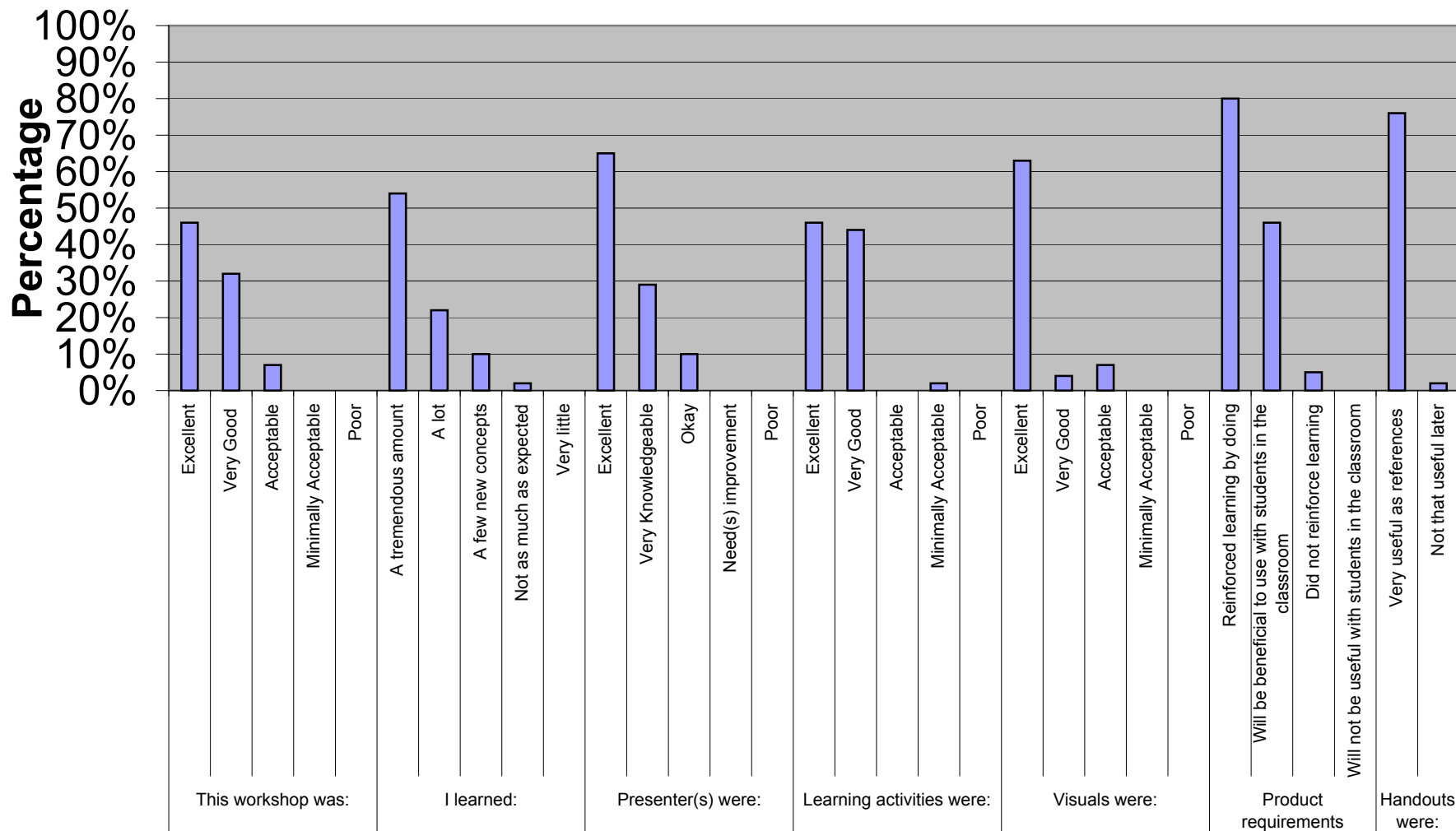
# TESA Feedback



# Illinois Learning Standards Feedback



# Learning Styles & Multiple Intelligences



# Instructional Models Feedback

