

Residential Life Update

AASAP BOT Committee Meeting

Eric Weldy, Ed.D.

Vice President for Student Affairs
& Enrollment Management

November 17, 2016

© 2016 Northern Illinois University

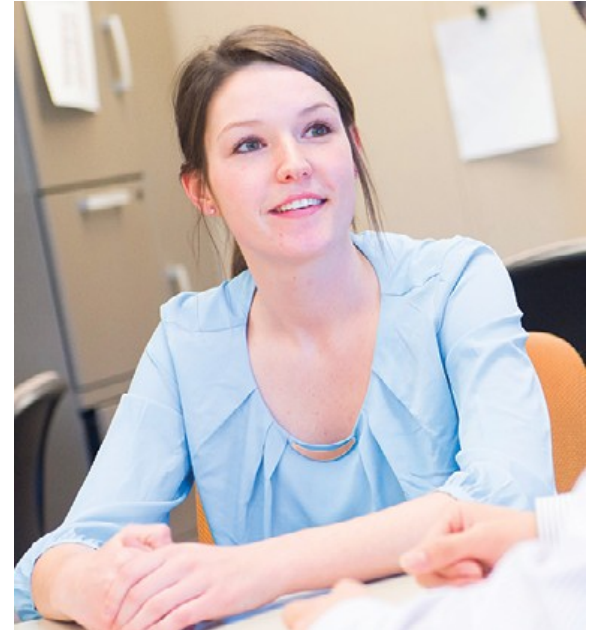


Northern Illinois University
Your Future. Our Focus.



Overview

- General Benefits of On-Campus Living
- Select Programs and Services in NIU Residence Halls
- NIU Living-Learning Communities



General Benefits of On-Campus Living

Positive Effects of Living on Campus*

- Belonging
- Engagement
- Openness to diversity

Select **National Survey of Student Engagement** Data

- More first-year students living on campus reported high-quality interactions** with other students than those living off campus
- In general, when compared to students living FARTHER THAN walking distance, living ON CAMPUS is associated with first year students' perceptions of the institution's emphasis on:
 - Providing opportunities to be involved socially
 - Providing support for their overall well-being
 - Attending campus activities and events
- On-campus first-year students work with faculty on activities outside of class more than those living farther than walking distance.

*Center for Postsecondary Research, Indiana University School of Education

** Percentage rating at least 6 on a 7-point scale



Programs & Services in NIU Residence Halls

Nationally-Recognized Residential Curriculum

Tutoring Labs (<http://www.niu.edu/access/>)

- Grant Towers South
- New Residence Hall

University Writing Center

- Stevenson South

Residential Computer Labs

- Including a newly renovated, technology rich Grant South Study Lounge and Lab

Regionally and Nationally-Recognized Leadership Opportunities through RHA and NRHH



NIU Living-Learning Communities

- ACES House: Academic and Career Exploratory Scholars
- Business Careers House
- Fine Arts House
- [Foreign Language Residence Program](#)
- Green Living Community
- Health Professions House
- Honors House
- Leadership and Service Community
- LGBTQA Community
- ROTC House
- Science, Technology, Engineering, and Math (STEM) Careers House
- Second Year Experience Community
- Teacher Education and Certification House
- Transfer House